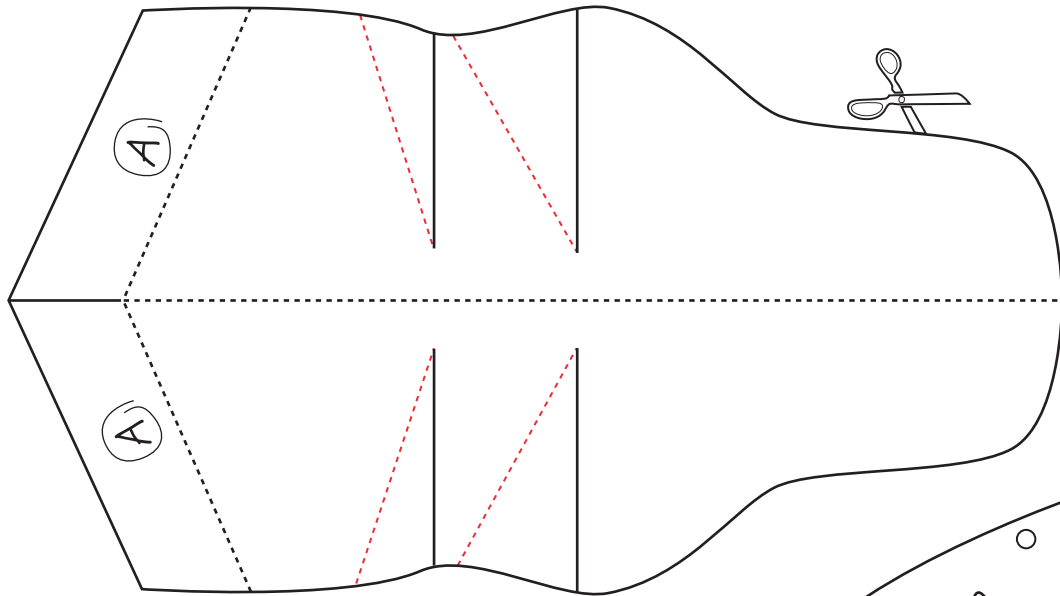
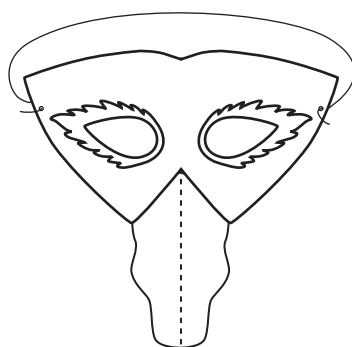
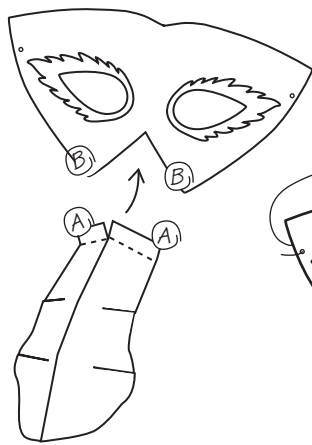
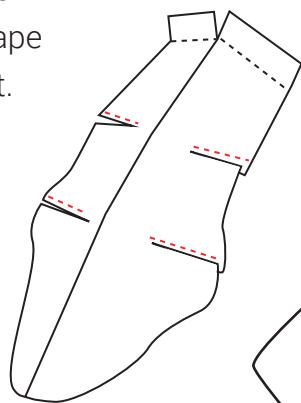
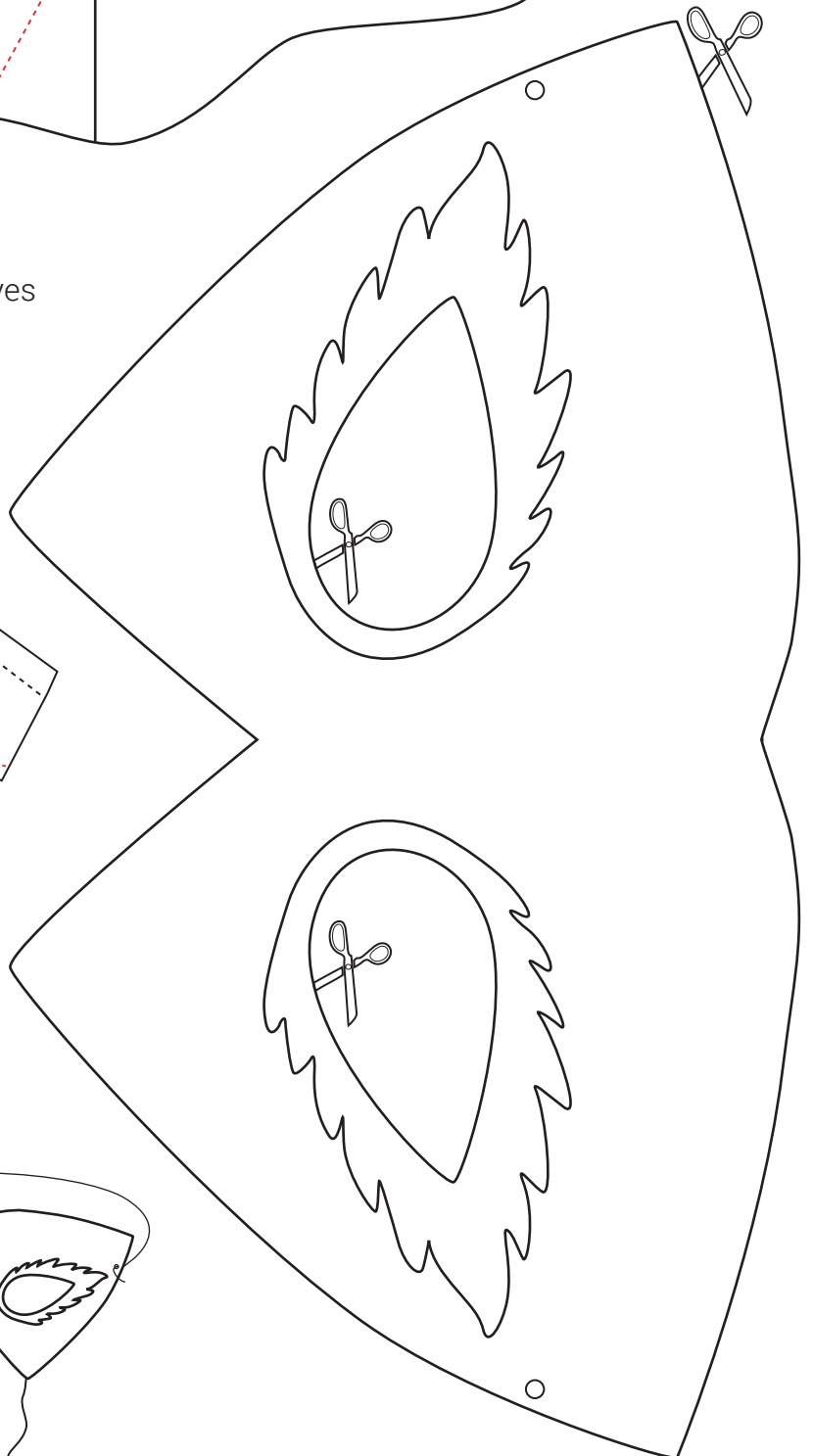


FLAMINGO MASK



1. Colour the mask and the beak.
2. Cut out the mask, the holes for the eyes and the beak along the black outline.
3. Cut into vertical solid black lines on the beak. Fold it along the black dotted lines. Then glue the beak in the red dotted lines.
4. Make the beak more durable by adding tape to the back side of it.
5. Glue parts A and B together.



B

B