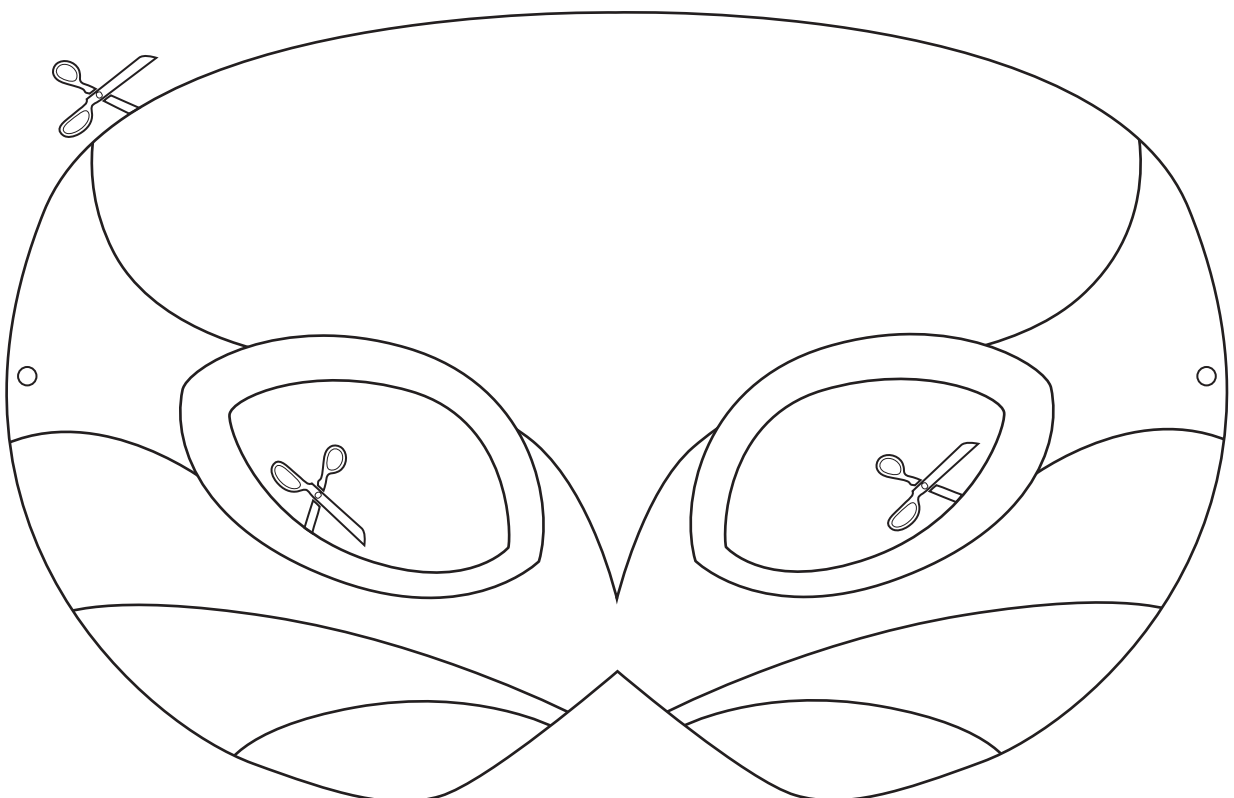
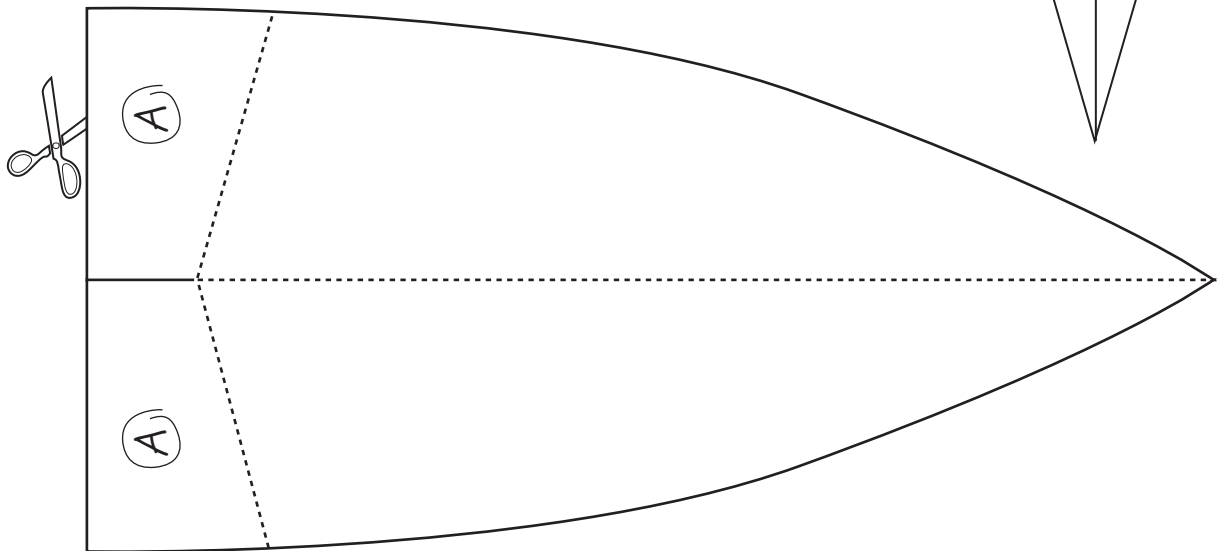
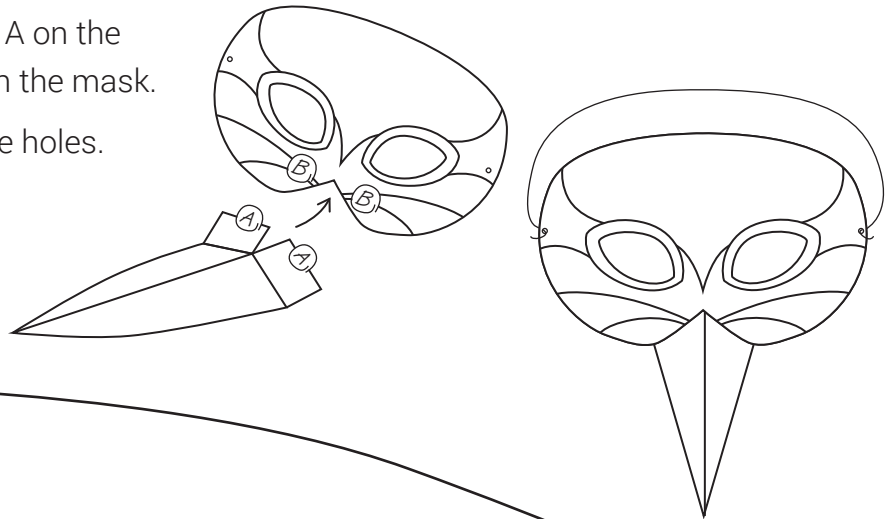


# KINGFISHER MASK

1. Colour the mask and the beak.
2. Cut out the mask, the holes for the eyes and the beak along the black outline.
3. Fold along the dotted lines.
4. Glue together the parts marked A on the beak with the parts marked B on the mask.
5. Pass an elastic cord through the holes.

Using these masks, you can work together with your friends or classmates to give a "feathered" performance to your families or school!!



(B)

(B)